

A photograph of the Burj Khalifa skyscraper in Dubai, United Arab Emirates, rising vertically from a thick layer of white, fluffy clouds. The sky above is a deep blue with scattered white clouds. The sun is visible on the right side, creating a bright glow and casting a soft light on the clouds. The overall mood is serene and majestic.

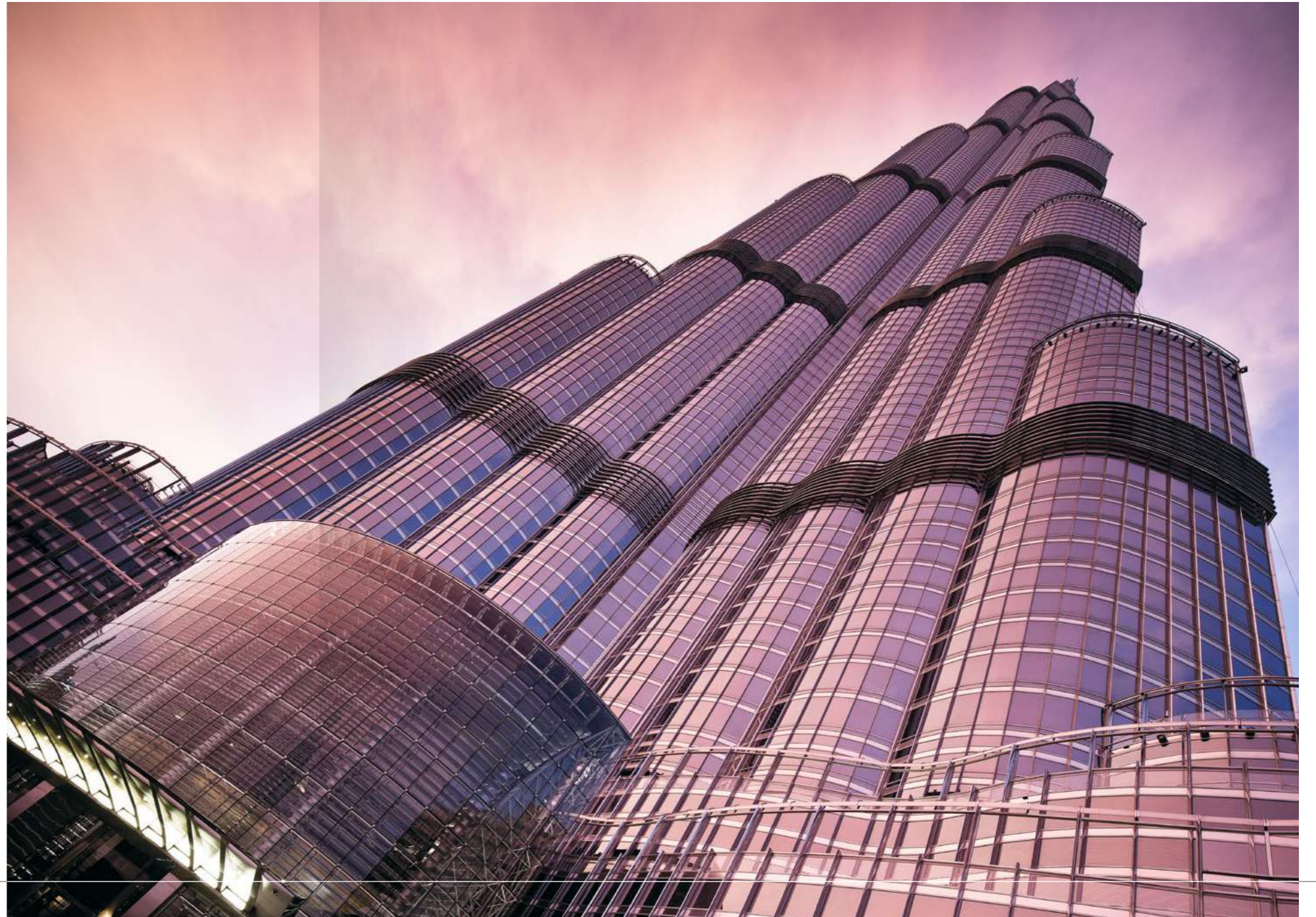
LIFE LOOKS BETTER ABOVE THE
CLOUDS

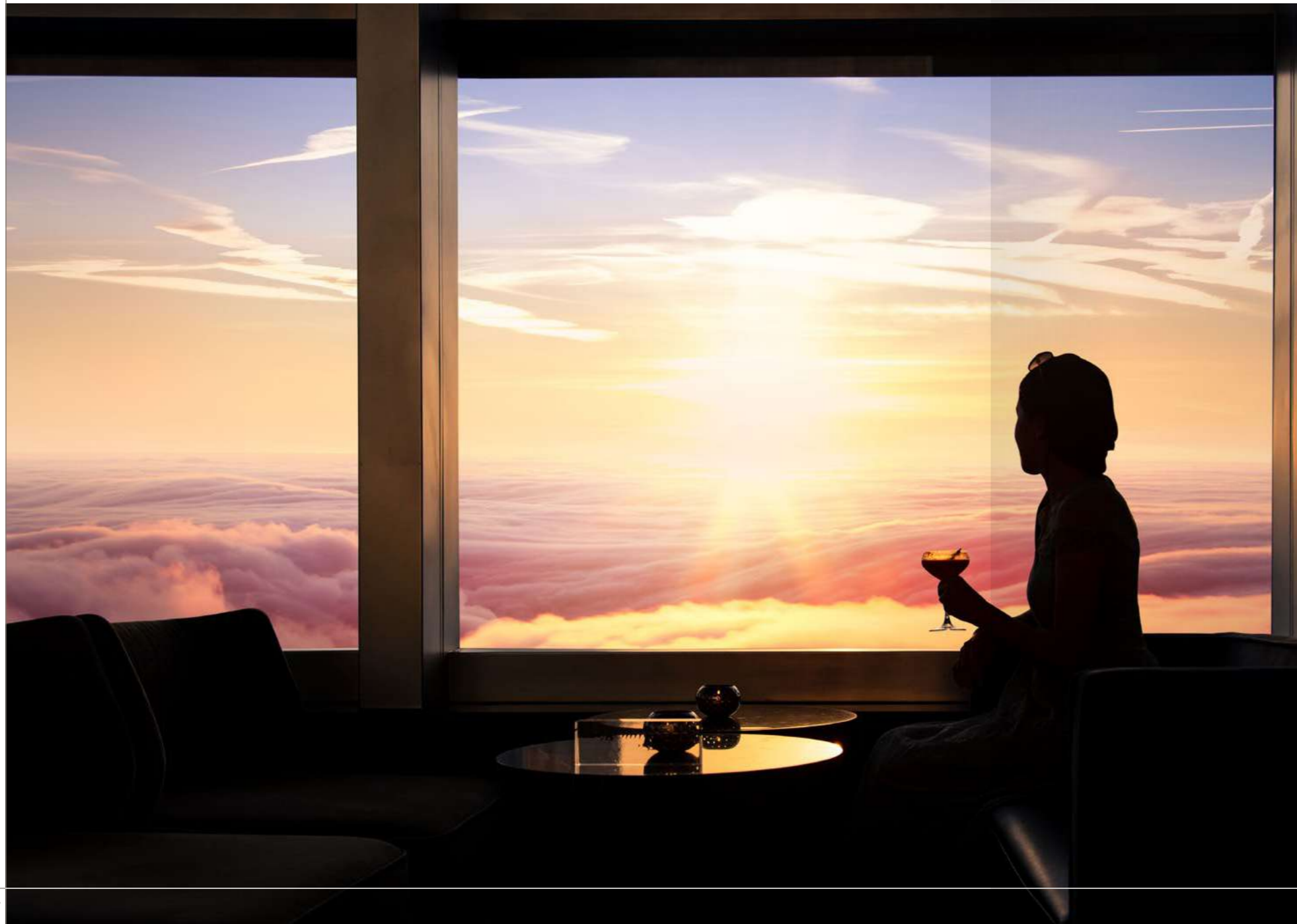
BURJ KHALIFA

BURJ KHALIFA

Stunning in every aspect. Designed to impress. Burj Khalifa is a living wonder and the tallest building in the world at 828 meters (2,716.5 ft), with over 200 floors, including 158 habitable levels.

Rising gracefully from the desert, it is an extraordinary union of art, engineering and meticulous craftsmanship.





A UNIQUE ADDRESS

A home at Burj Khalifa is the most iconic expression of luxury living in the world. For those with a taste for the finest in life, now is the chance to own a luxurious apartment – to dream big and live even bigger – at one of the most coveted addresses in the heart of Dubai.

WHY DUBAI

From its thriving multinational culture to its monumental success in the world of business, Dubai has evolved to become one of the best cities in the whole world. Apart from being one of the most luxurious cities, with ultra-modern buildings and architecture, Dubai is also a lifestyle haven with ultra-modern shopping and entertainment destinations to assuage every sophisticated style.





WHY DOWNTOWN DUBAI

Comprising sumptuous neighbourhoods surrounding Sheikh Mohammed bin Rashid Boulevard, the 500-acre settlement houses numerous developments that are home to tens of thousands of residents. The Dubai Mall and Dubai Opera rest on either side of Emaar's crown jewel, Burj Khalifa, with opulent hotels and multiple other shopping and leisure venues scattered throughout open green spaces dotted with lakes and fountains and illustrious works of art.

LIVING ON TOP OF THE WORLD

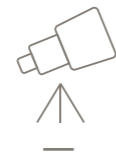
Not only is the Burj Khalifa the world's tallest building, but it has also broken two other records - the tallest structure and the tallest free-standing structure. You will be living at the world's most prestigious address.

828+
—
Meters Tall

160+
—
Stories



World's Highest Lounge
at 585 Meters



World's Highest Outdoor
Observation Deck





SPECTACULAR INTERIORS

Throughout the tower, stunning silver travertine floors flow towards Venetian stucco walls, and gorgeous handmade rugs merge into polished stone floors. An intricate inter-weaving of steel, Brazilian Santos rosewood and glass finishes and the finest detailing all work together to reflect shelter, comfort and the highest level of luxury.

A woman with her hair styled in an updo, wearing a white lace dress, is seen from the back, looking out at a vibrant sunset sky filled with colorful clouds. The sky transitions from deep blue on the left to bright orange and pink near the horizon, with large, dark blue and purple clouds scattered throughout. The woman's right hand is slightly raised, palm facing forward.

YOUR
PENTHOUSE
IN THE SKY

BURJ KHALIFA

AN ELEVATED LIVING EXPERIENCE

A living experience unlike any other, a Burj Khalifa Penthouse is iconic in every detail – iconic design, iconic architecture, and one iconic address. Extending over two sumptuous floors and offering truly spellbinding views from its exquisite floor-to-ceiling windows, the penthouse is the perfect coalescence of space, comfort and luxury – best experienced at the top of the world.





LIVE, WORK, PLAY

Luxury meets leisure within Burj Khalifa – this ‘vertical city’ within a city offers residents and visitors outstanding dining venues and recreational facilities.

These include:

- Tennis and Basketball court
- Meeting rooms on levels 43, 76 (Residences)
- Residential lounge
- Swimming Pools on levels 43, 76
- Gym facilities on levels 43, 76, 77
- Children’s indoor and outdoor play area
- 3,000 car parking spaces on four levels

BREAKING WORLD RECORDS

Burj Khalifa is home to many world firsts. Setting an array of architectural records, this marvelous landmark was developed by Dubai-based Emaar Properties PJSC.

Burj Khalifa...

“

Spans a total built-up area of 5.67 million square feet

“

Holds the world record for vertical concrete pumping

“

Total built-up area: 5.67 million square feet.

“

Is the tallest building, tallest man-made structure and tallest free-standing structure in the world

“

Has the tallest service elevator in the world

“

Final height: 828 meters (2,716.5 ft)

“

Has the greatest number of storeys and highest occupied floor in the world

“

Holds the record for the highest installation of an aluminum and glaze façade

“

Final number of floors: Over 200 storeys, including 158 habitable levels

“

Has the highest outdoor observation deck in the world

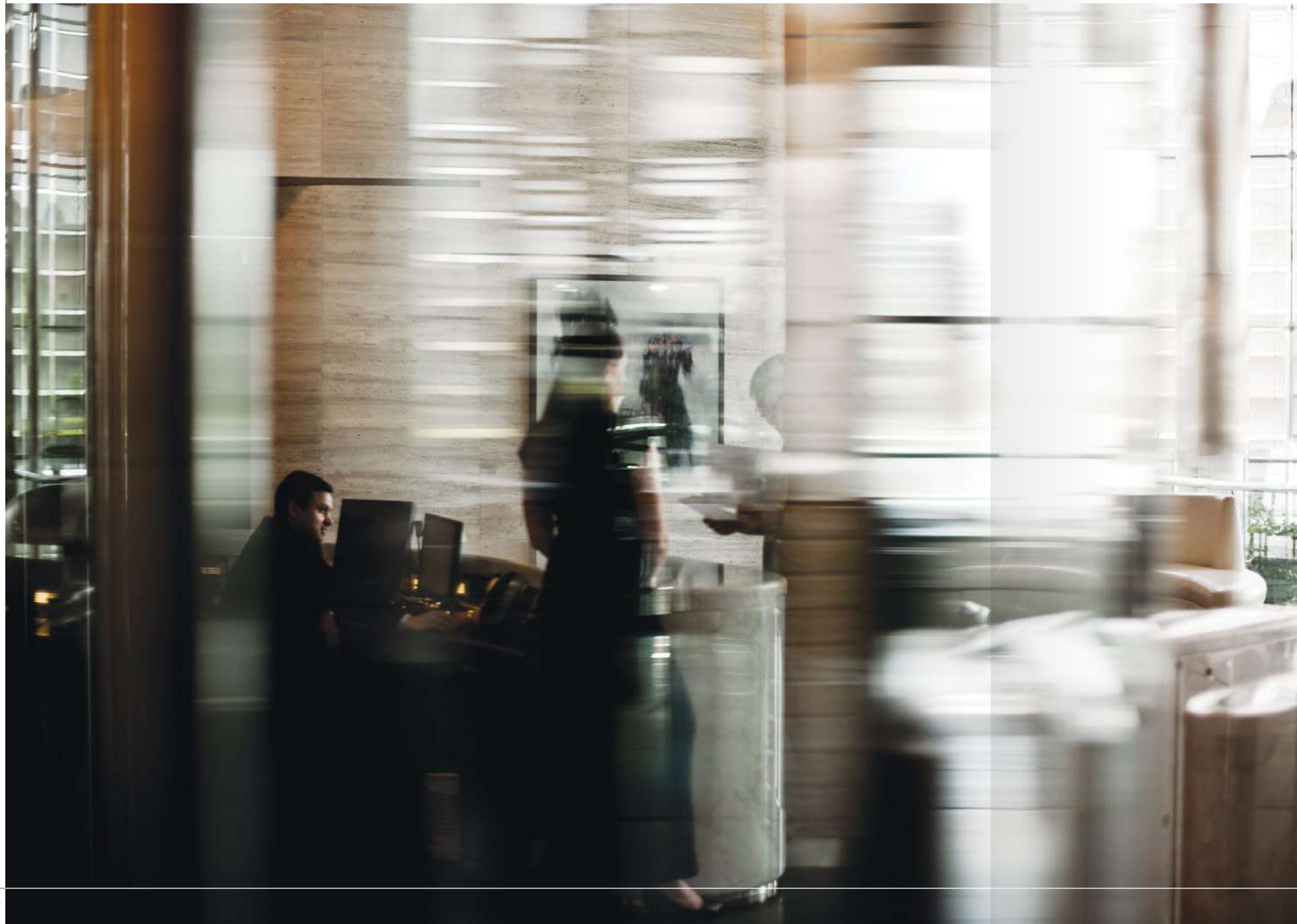
“

Has the world's highest swimming pool on level 76

“

Total number of elevators: 57





THE ZENITH OF CONVENIENCE

To complement the residences, offices and hotel, Burj Khalifa offers a range of fully integrated facilities management and customer care services. These conveniences are managed by a team of highly trained professionals and include retail kiosks, concierge, courier and deliveries and laundry services.

LIVE IN THE HEART OF DUBAI

05

Minutes to Dubai International Financial Centre (DIFC)

10

Minutes from Dubai International Airport

15

Minutes from Dubai Creek Harbour

20

Minutes from Global Village

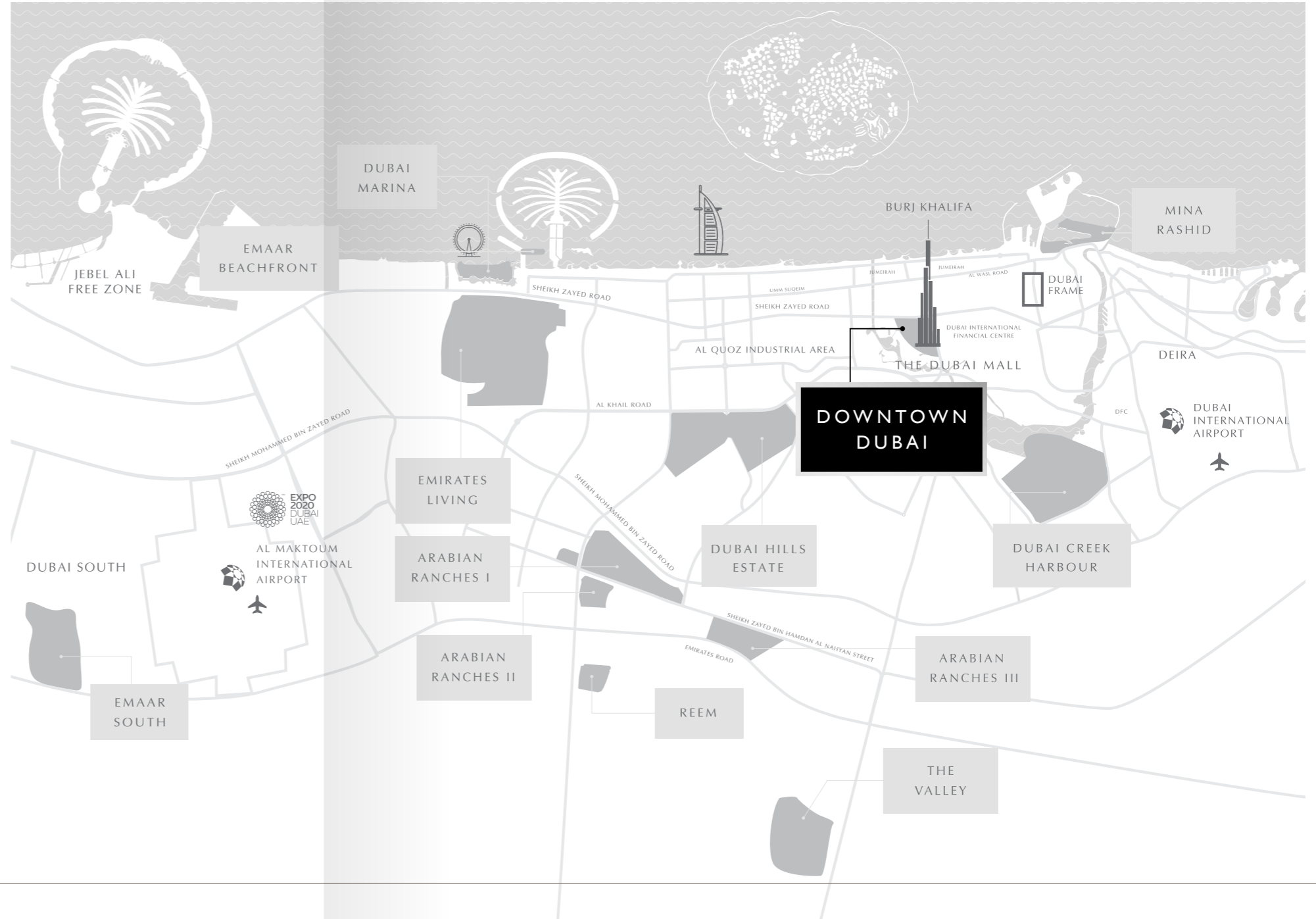
20

Minutes from Dubai Marina

40

Minutes from Al Maktoum International Airport

24





THE STRENGTH OF EMAAR

An undisputed leader in the local real estate market, Emaar has grown over the years to become the largest global developer outside China. You will be investing with one of the most prestigious brands in the world.*

Market Cap USD	Revenue USD	Net Profit USD
7.3 BN	5.4 BN	712 MN
— FY 2020	— FY 2020	— FY 2020
72,000+	38,000+	
Residential Units Delivered	Units Under Construction	

*Source: Brand Finance 2018 Report



EMAAR