



VĚRA

RESIDENCES

BUSINESS BAY

YK
YK
YK
YK
YK
YK
YK
YK
YK
YK

VV

PRICELESS LIFESTYLE.
PLATINUM LOCATION.

WONDER OF
THE
WORLD

DUBAI

Dubai has written its success story in the desert sands in less than five decades. Centrally located between the continents of Asia, Africa and Europe, this powerhouse emirate has become the tourism and business hub of the region.

With up to 10% rental returns, combined with capital appreciation and the relatively low cost of real estate ownership, along with readily available financing options, the Dubai property market ensures it remains highly liquid.

AED 131 BILLION

in real estate transactions in H1 2017, of which:

AED 58 BILLION

in investment-related property transactions

**SAFE AND
VERY SOUND**

**OPEN AND
FREE SYSTEM**

8.06 MILLION

overnight guests in H1 2017

**STRATEGIC
LOCATION**

**EASE OF
BUSINESS
SET UP**

**WORLD-CLASS
INFRASTRUCTURE**

STABLE CURRENCY



**BUSINESS
BAY**

**THE
REGION'S
BUSINESS
CAPITAL**





A
PLATINUM
LOCATION

BUSINESS BAY

For people seeking a lively community, Business Bay offers the ultimate lifestyle. With every amenity just around the corner, you can unwind with strolls on covered walkways through lush parks, along azure waterways, and admire modern architecture piercing the sky.

Next to dedicated play areas, landscaped plazas and comfortable working spaces, you'll also find Dubai's most popular neighbourhoods and attractions, as well as world-famous entertainment and retail choices just moments away.





**EXPERIENCE
LIFE AT
ITS FINEST**

BE SPOILT FOR CHOICE

Browse the finest designer stores and high-end fashion boutiques in the world's largest mall next door, or dine on an impressive choice of mouth-watering cuisines,

including charming food trucks, international restaurants and cafés that Business Bay and Downtown Dubai have to offer.

Věra is strategically located in Business Bay, overlooking the Dubai Canal and in close proximity to the prestigious Downtown Dubai district.



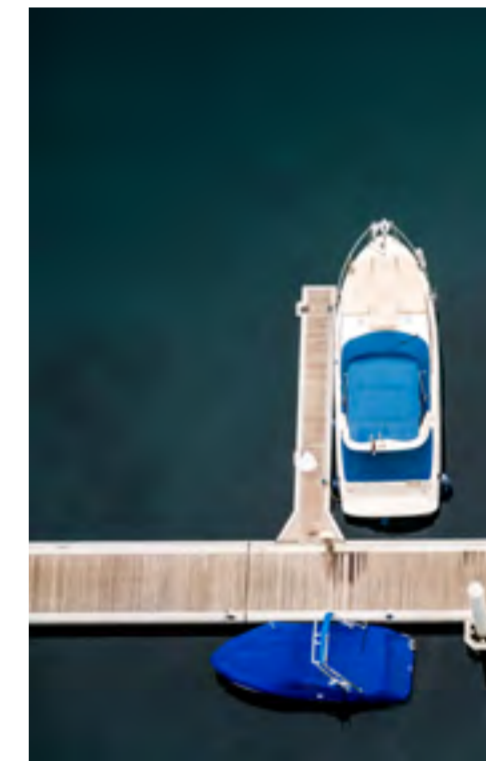


A CENTRAL ADDRESS

STAY CONNECTED TO THE CITY

Vera is strategically located in Business Bay, overlooking the Dubai Canal, in close proximity to the prestigious Downtown Dubai district – which is connected to the rest of the city by an intricate

transportation network of metro, trams and buses, in addition to land and water taxis, with easy access to and from the Sheikh Zayed Road and Al Khail Road.





**WHERE LUXURY HAS
NO LIMITS**

VĚRA RESIDENCES

A 30-storey tower, the Věra Residences offer a range of life-enhancing amenities and facilities:

- Studios and one and two-bedroom apartments
- Elegant lobby with 24-hour reception and concierge desk
- Landscaped gardens
- Temperature-controlled swimming pool
- State-of-the-art gymnasium with separate changing rooms for men and women
- Steam rooms and sauna
- Kids club
- Covered parking
- Fully fitted kitchen



**SPACIOUS
INTERIORS**

**DESIGNED
TO
IMPRESS**



**AN UNFORGETTABLE
EXPERIENCE**

ELEGANT LUXURY INSIDE OUT

The beautifully styled lobby and refined ambience of Véra deftly sets the scene for the experience that awaits you.

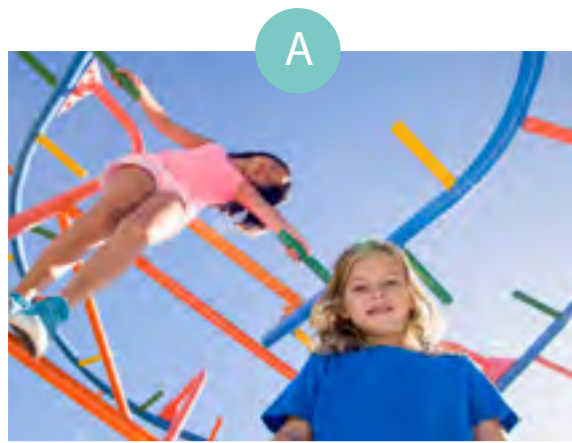
Come home to luxurious apartments with tastefully appointed interiors, fitted kitchens, spacious bathrooms and more.



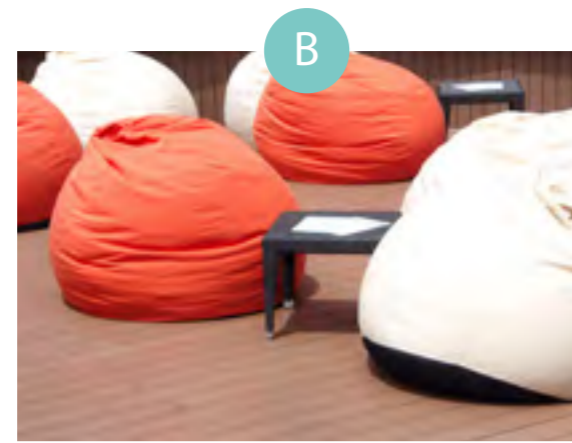
**IT'S THE BEST
OF ALL WORLDS
WITHIN YOUR
APARTMENT**



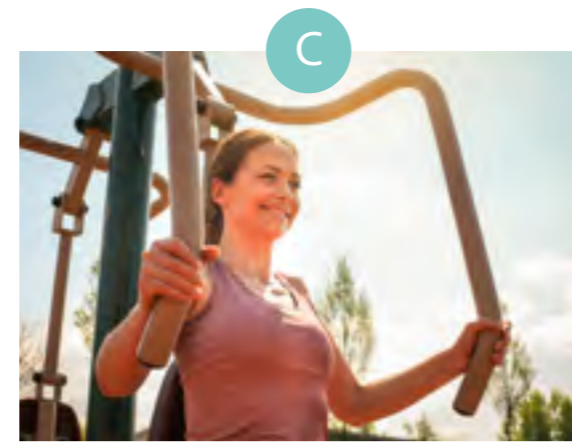
PARADIGM OF
A URBAN
LIVING



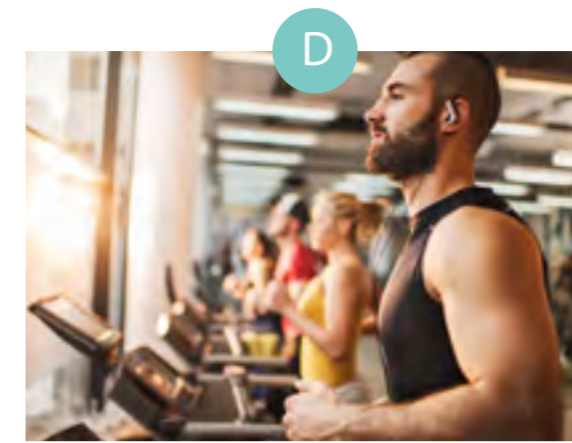
CHILDREN'S PLAY AREA



OUTDOOR COURTYARD



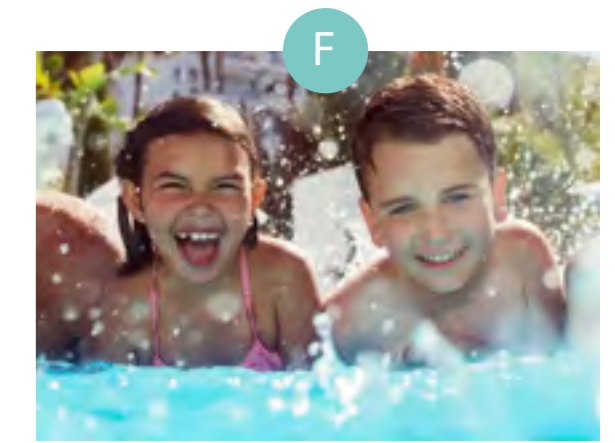
OUTDOOR GYMNASIUM



INDOOR GYMNASIUM



WATER PLAY



SWIMMING POOL | KIDS POOL



YOGA | MEDITATION AREA

COMPLETE FAMILY ENTERTAINMENT



**ENERGISE
YOURSELF
IN STYLE**

WELLBEING ASSURED

Challenge yourself with a vigorous work-out at the state-of-the-art gymnasium, with all of the latest premium fitness equipment.

Discover a peaceful space to unwind and relax in Vēra's

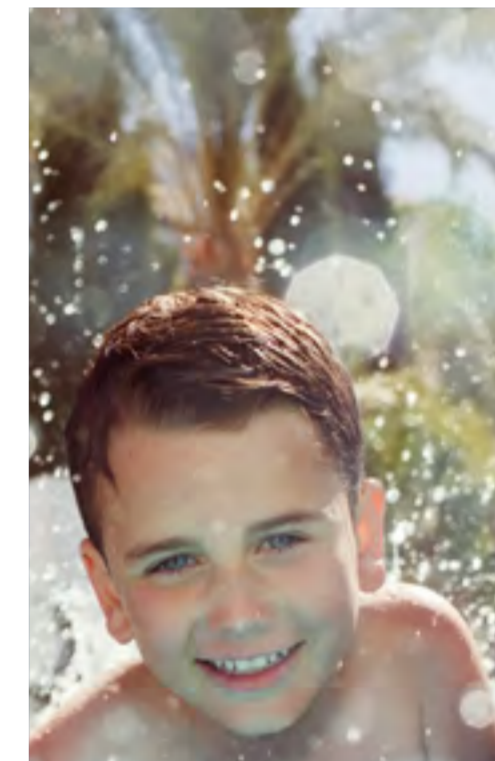
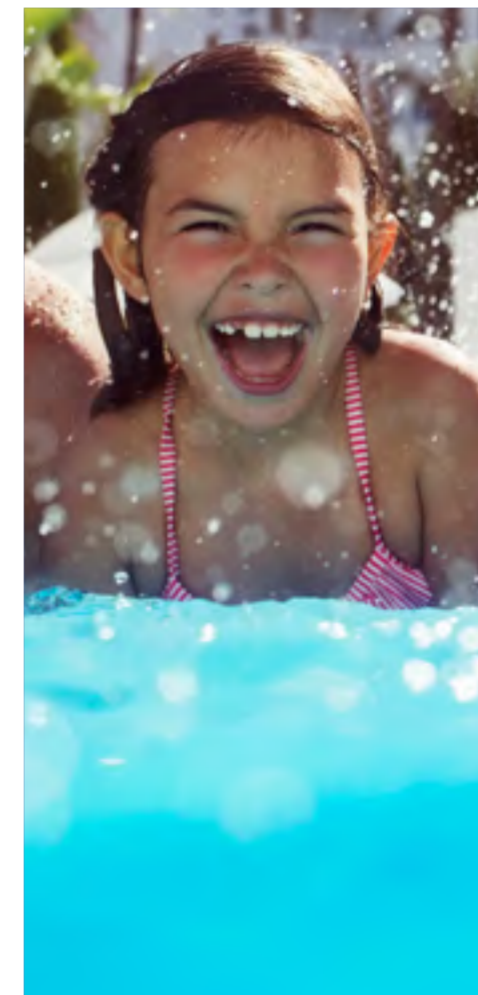
wellness area, a place which has been carefully designed to help you clear your head after a busy day. Find the perfect space for yoga or to take a break and de-stress through meditation.



RELAX AND
REJUVENATE

DIVE INTO THE BLUE

Start the day with a refreshing swim in the temperature-controlled pool or soak away the stresses of the day with a pre-dinner dip.





**TYPICAL
FLOOR
PLANS**

DISCLAIMER:
ALL PICTURES, PLANS, LAYOUTS,
INFORMATION, DATA AND DETAILS INCLUDED
IN THIS BROCHURE ARE INDICATIVE
ONLY AND MAY CHANGE AT ANY TIME UP
TO THE FINAL 'AS BUILT' STATUS IN
ACCORDANCE WITH THE FINAL DESIGNS
OF THE PROJECT, REGULATORY APPROVALS
AND PLANNING PERMISSIONS.

TYPICAL FLOOR PLAN

4TH FLOOR

Disclaimer: All pictures, plans, layouts, information, data and details included in this brochure are indicative only and may change at any time up to the final 'as built' status in accordance with the final designs of the project, regulatory approvals and planning permissions.

UNIT TYPE	UNIT NUMBERS
1 BEDROOM	3, 10, 11, 12, 13, 14, 15, 16, 17, 18
2 BEDROOM	1, 2, 4, 5, 6, 7, 8, 9



TYPICAL FLOOR PLAN

5TH FLOOR

Disclaimer: All pictures, plans, layouts, information, data and details included in this brochure are indicative only and may change at any time up to the final 'as built' status in accordance with the final designs of the project, regulatory approvals and planning permissions.

UNIT TYPE	UNIT NUMBERS
STUDIOS	15, 16, 17, 18
1 BEDROOM	3, 10, 11, 12, 13, 14, 19, 20, 21
2 BEDROOM	1, 2, 4, 5, 6, 7, 8, 9, 22



TYPICAL FLOOR PLAN

FLOORS 6-28

Disclaimer: All pictures, plans, layouts, information, data and details included in this brochure are indicative only and may change at any time up to the final 'as built' status in accordance with the final designs of the project, regulatory approvals and planning permissions.

UNIT TYPE	UNIT NUMBERS
1 BEDROOM	3, 10, 11, 12, 13, 14, 15, 16, 17, 18, 19, 20
2 BEDROOM	1, 2, 4, 5, 6, 7, 8, 9, 21



TYPICAL FLOOR PLAN

STUDIO

Disclaimer: All pictures, plans, layouts, information, data and details included in this brochure are indicative only and may change at any time up to the final 'as built' status in accordance with the final designs of the project, regulatory approvals and planning permissions.

UNIT AREA	BALCONY	TOTAL
229 sqft	86 sqft	315 sqft



TYPICAL FLOOR PLAN

1-BED

Disclaimer: All pictures, plans, layouts, information, data and details included in this brochure are indicative only and may change at any time up to the final 'as built' status in accordance with the final designs of the project, regulatory approvals and planning permissions.

UNIT AREA	BALCONY	TOTAL
349 sqft	125 sqft	474 sqft



TYPICAL FLOOR PLAN

2-BED

Disclaimer: All pictures, plans, layouts, information, data and details included in this brochure are indicative only and may change at any time up to the final 'as built' status in accordance with the final designs of the project, regulatory approvals and planning permissions.

UNIT AREA	BALCONY	TOTAL
668 sqft	233 sqft	901 sqft





24/7 Sales Contact No.
+971 4248 3400

More Details are Available in
<http://www.tanamiproperties.com>